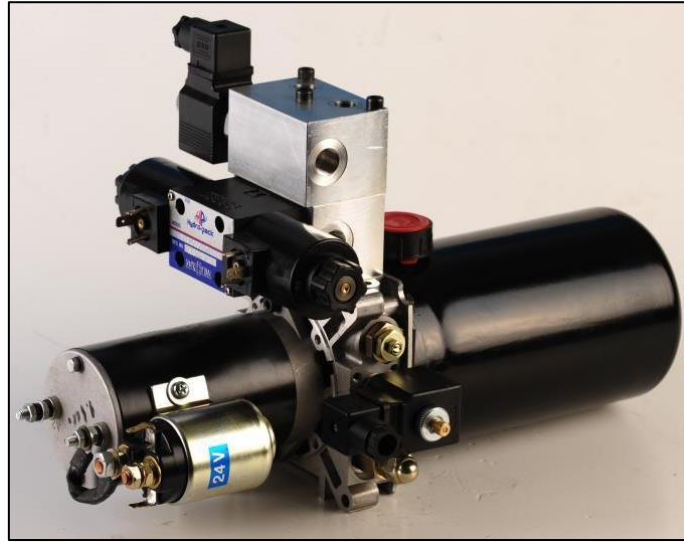


**APPLICATIONS FOR HYDRAULIC MINI POWER PACKS**

Hydraulic power units (sometimes referred to as a hydraulic power pack) is a self-contained system that generally includes a motor, a fluid reservoir, and a pump. It works to apply the hydraulic pressure needed to drive motors, cylinders, and other complementary parts of a given hydraulic system.



*Hydraulic mini power pack*

As Hydropack, we manufacture hydraulic mini power packs and hydraulic blocks. We offer wide range of solutions suitable for different applications such as tippers, dock levelers, car lifts, stackers and wheelchair lifts. We have made efforts to make continuous innovation and with developing technology which enables us to provide best quality products with best price and service to our business partners. We care about quality control by testing each hydraulic unit before delivery. We can also provide NG6 and customized hydraulic blocks.

**APPLICATIONS**

***Aerial platform***



***Scissor lift***



***Tyre changer***

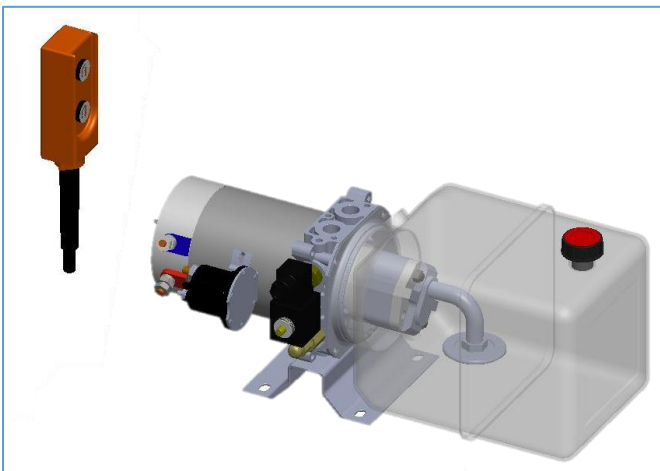


**Hydraulic press**

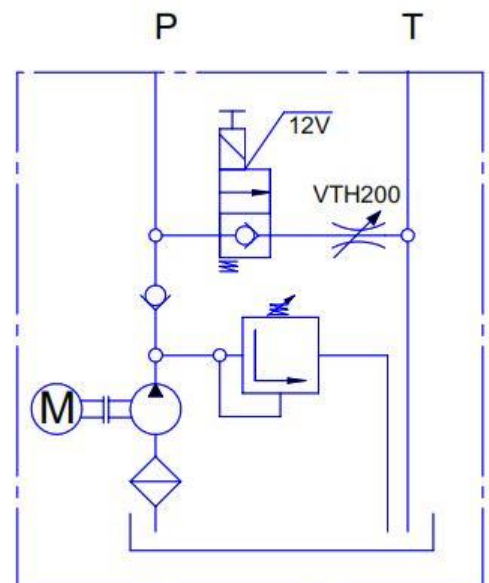
**Band saw machine**

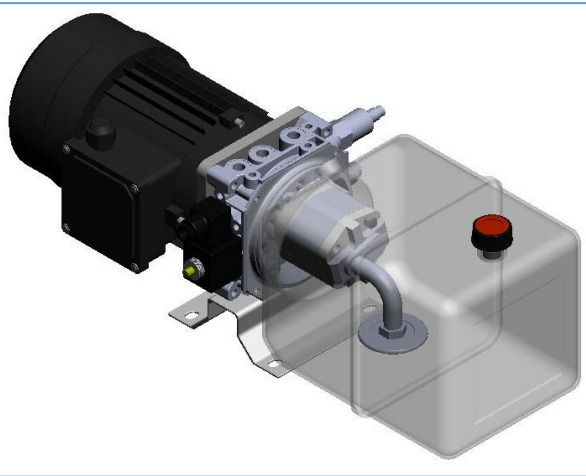
**4 post lift**


Here are some main examples of Hydropack power pack applications. Electric motor, pump, oil tank and some other component specifications can be changed according to user demand.

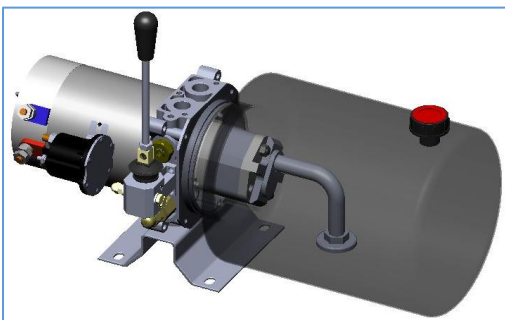
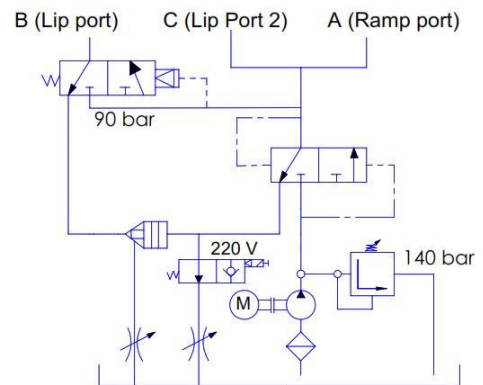


<b>Main Application</b>	<b>Tipper</b>
<b>Electric motor</b>	1.6 kW 12 V DC
<b>Hydraulic pump</b>	2.1 cc/rev
<b>Oil tank</b>	6 liter plastic tank, horizontal
<b>Hydraulic circuit</b>	Single acting
<b>Optional parts</b>	Two button pendant

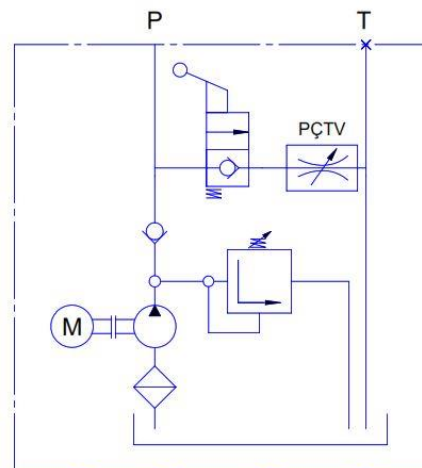


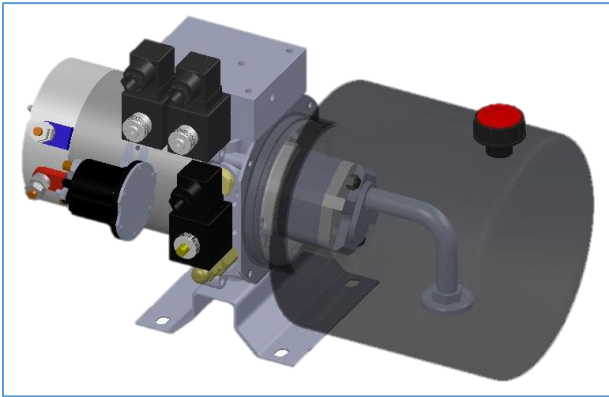


<b>Main Application</b>	<b>Dock leveler</b>
<b>Electric motor</b>	1.1 kW 380 V AC
<b>Hydraulic pump</b>	2.7 cc/rev
<b>Oil tank</b>	6 liter plastic tank, horizontal
<b>Hydraulic circuit</b>	Ramp & lip cylinders are single acting Ramp cylinder single, lip cylinder is double acting
<b>Optional parts</b>	Normally closed/open 2/2 cartridge valve

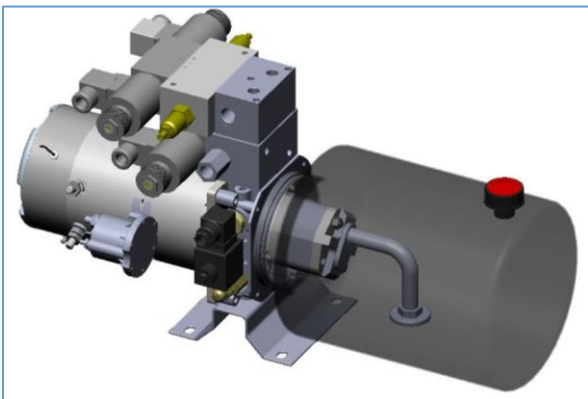
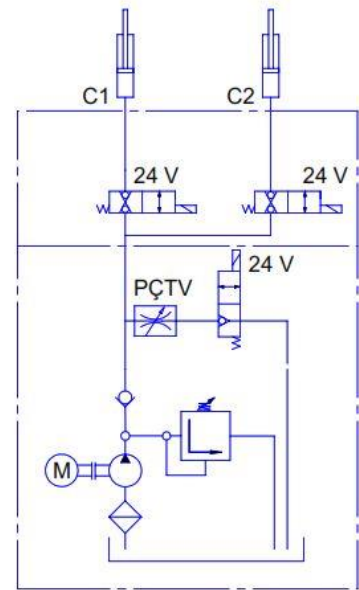


<b>Main Application</b>	<b>Electric stacker</b>
<b>Electric motor</b>	1.6 kW 12 V DC
<b>Hydraulic pump</b>	1.3 cc/rev
<b>Oil tank</b>	8 liter steel cylinder tank, horizontal
<b>Hydraulic circuit</b>	Single acting
<b>Optional parts</b>	Flow control valve to adjust return speed

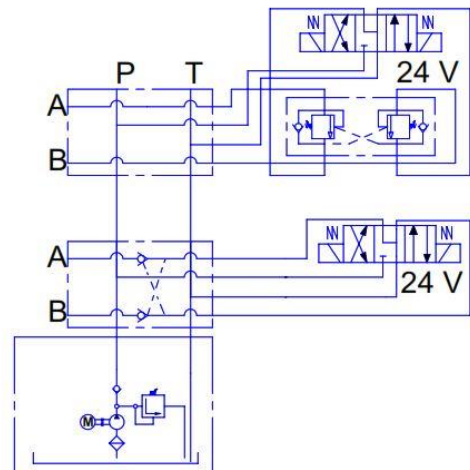




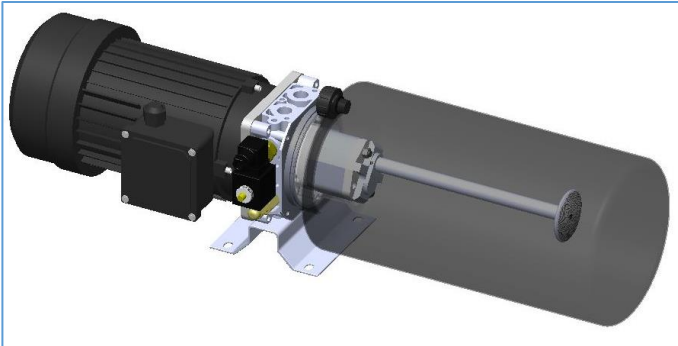
<b>Application</b>	<b>Lift gate</b>
<b>Electric motor</b>	2.2 kW 24 V DC
<b>Hydraulic pump</b>	2.1 cc/rev
<b>Oil tank</b>	8 liter steel cylinder tank, horizontal
<b>Hydraulic circuit</b>	Two single acting cylinders
<b>Optional parts</b>	Flow control valve to adjust return speed



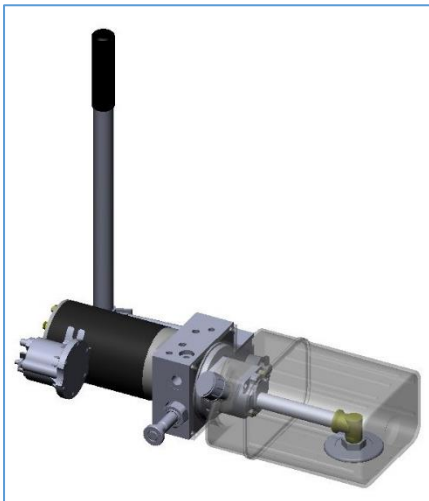
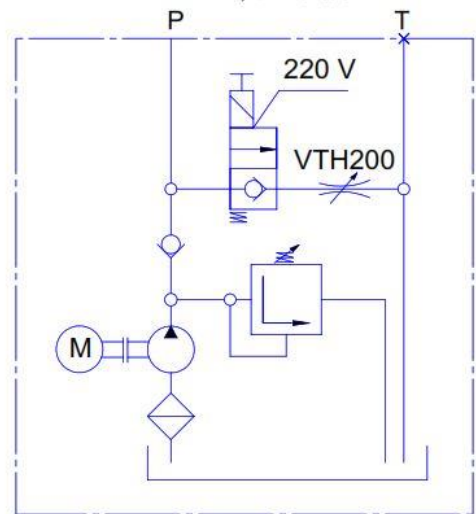
<b>Main Application</b>	<b>Snowplough</b>
<b>Electric motor</b>	3 kW 24 V DC
<b>Hydraulic pump</b>	2.1 cc/rev
<b>Oil tank</b>	8 liter steel cylinder tank, horizontal
<b>Hydraulic circuit</b>	Double acting system with double overcenter valve
<b>Optional parts</b>	







<b>Main Application</b>	<b>2 post car lift</b>
<b>Electric motor</b>	2.2 kW 380 V AC
<b>Hydraulic pump</b>	4.2 cc/rev
<b>Oil tank</b>	12 liter steel cylinder tank, vertical
<b>Hydraulic circuit</b>	Single acting
<b>Optional parts</b>	Two button pendant



<b>Main Application</b>	<b>Wheelchair lift</b>
<b>Electric motor</b>	0.8 kW 12 V DC
<b>Hydraulic pump</b>	0.5 cc/rev
<b>Oil tank</b>	1.5 liter plastic tank
<b>Hydraulic circuit</b>	Single acting, hand pump integrated
<b>Optional parts</b>	

